

VOITH TRACTOR TUG

C-681 - "SHACKLETON"
C-682 - "BEAUFORT"

Applications: **BERTHING / UN-BERTHING AND FIRE FIGHTING**
 Classification: **BUREAU VERITAS.**
 Class: **I + HULL + MACH + AUT-UMS TUG**
FIRE FIGHTING SHIPPING E/WATER SPRAYING SHELTERED AREA.



MAIN CHARACTERISTICS:

Length o.a.	24,00 metres
Beam, moulded	11,00 metres
Depth at sides	4,25 metres
Max. draft	5,00 metres
Crew	2 men
Bollard pull	50 tons.
Speed	11,5 knots

PROPULSION

Main engines	2 x CAT
Type	3516B
Total Output	5.150 BHP (3.840 kW)
R.P.M.	1.600
Propellers	VOITH
Type	28R5/210-2

DECK MACHINERY

Windlass	Electric
Towing winch	2 Speed – 15T – 20 m/min. – 6T – 30 m/min.
Towing hook	55 tons. SWL

FI-FI SYSTEM (WATER/FOAM)

Fi-Fi pump	1 x 600 m ³ /h. 12 bar
Fire drenching arrangement	

TANK CAPACITIES:

Fuel oil	96 m ³
Fresh water	10 m ³
Lubrication oil	5,5 m ³
Foam	5 m ³

AUXILIARY GENERATING SETS

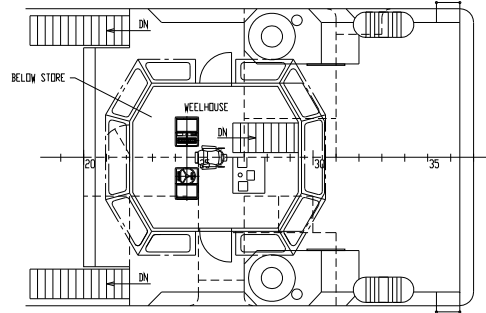
Diesel engines	CATERPILLAR C-9
Output	2 x 217 HP
Alternators	2 x SR4
Output	2 x 188 KVA
	400 V., 50 Hz.
R.P.M	1.500

MISCELLANEOUS

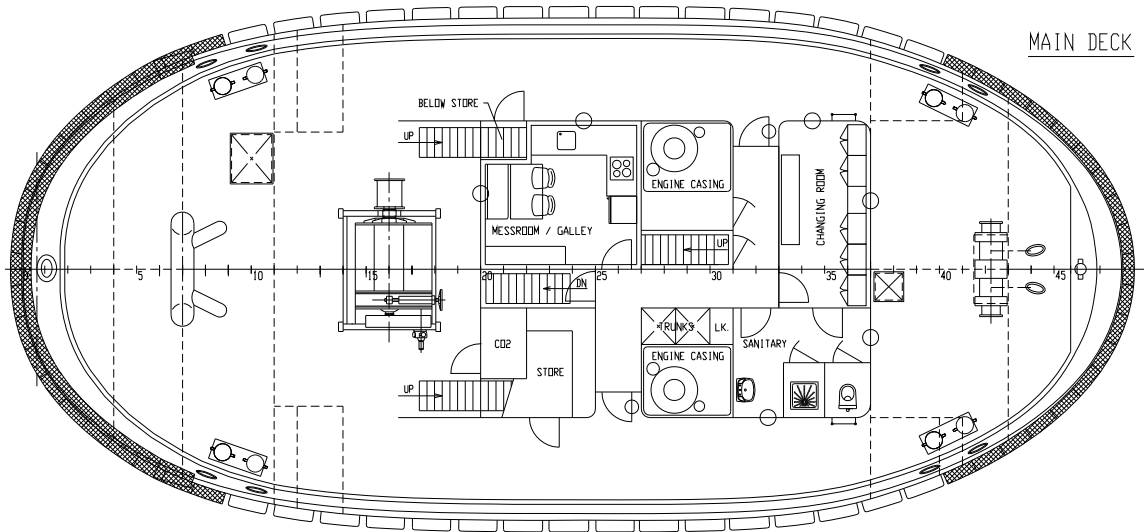
Air conditioning plant

VOITH TRACTOR TUG C-681 and C-682

BRIDGE DECK



MAIN DECK



LOWER DECK

