



ASTILLEROS ZAMAKONA, S.A.

SHIPYARD

SHUTTEL FERRY

C-505

"LA GIRONDE"



MAIN CHARACTERISTICS:

Length o.a.	78,00 metres
Beam max.	18,50 metres
Depth to main deck	5,15 metres
Draft	2,60 metres
Crew	8 men
Speed	14,0 knots

PROPULSION:

Main Diesel engines	4 x Wartsila
Output	4 x 1.000 kW. at 1.000 r.p.m.
Propellers	4 x Voith Scheiner
Type	VSP 21 GII/135

CARGO CAPACITIES:

Passengers	600
Cars (4,50 m. x 2,50 m.)	138
Trailers (18,00 m. x 3,00 m.)	6 (+92 cars)
Axle load	13,50 tons.

MISCELLANEOUS:

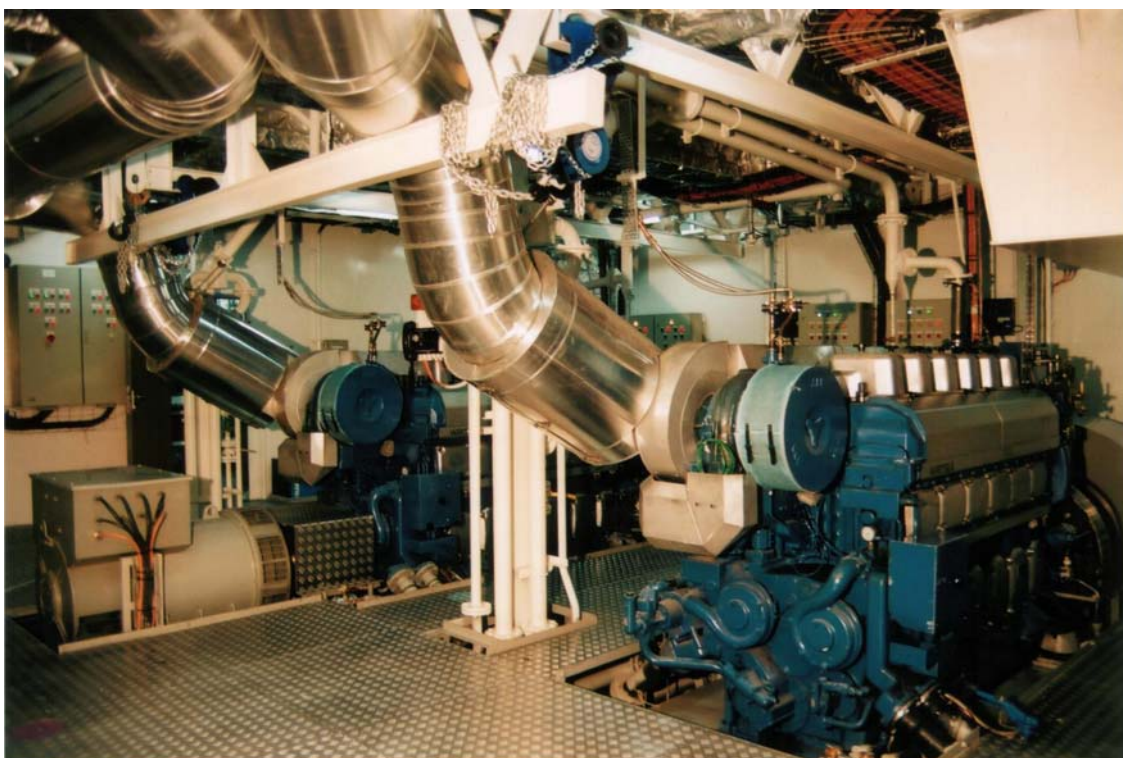
Evacuation System	ZODIAC
-------------------------	--------

CLASSIFICATION:

Bureau Veritas
I 3/3 E ✕ Passenger Ferry – Coastal waters
OIL POL – ENG ✕ AUT-MS - PFA



HULL ZAMAKONA – 505 FERRY “LA GIRONDE” – FRANCE



ASTILLEROS ZAMAKONA, S.A.
Puerto Pesquero, s/n.
P.B.: 24
48980 SANTURCE – VIZCAYA – SPAIN

Tel.: (34) 94 461 82 00 / (34) 94 493 70 30
Fax: (34) 94 461 25 80
E-mail: zamakona@zamakona.com
<http://www.astilleroszamakona.com>